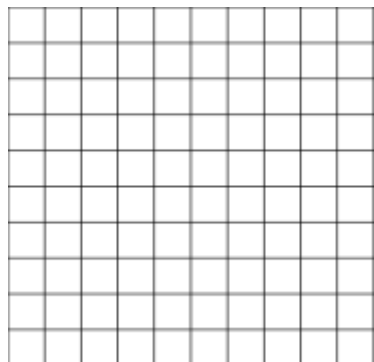


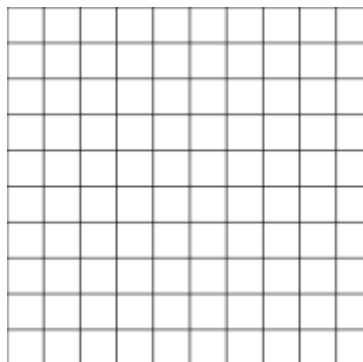
Graphing Absolute Value Functions Assignment

Graph each equation by translating the function $y = |x|$.

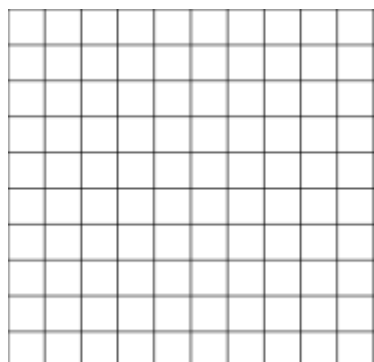
1. $y = |x| - 1$



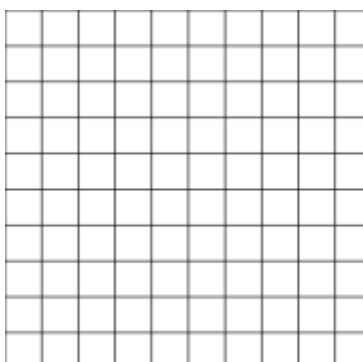
2. $y = |x| + 2$



3. $y = |x - 2|$

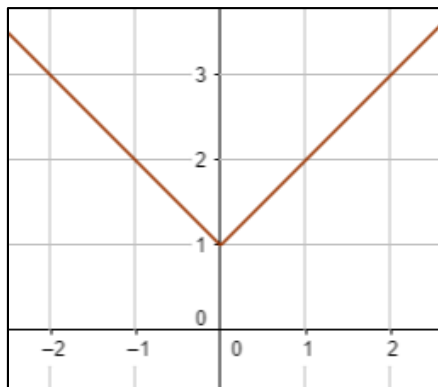


4. $y = |x + 4|$

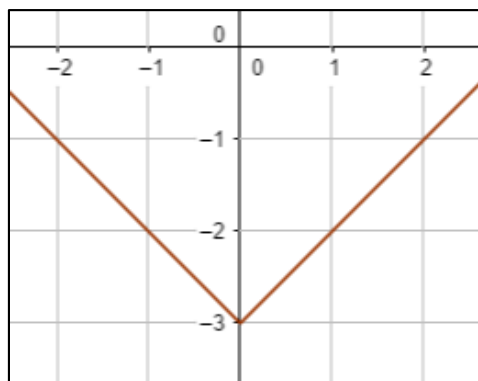


Write the equation represented by each graph shown below.

1.

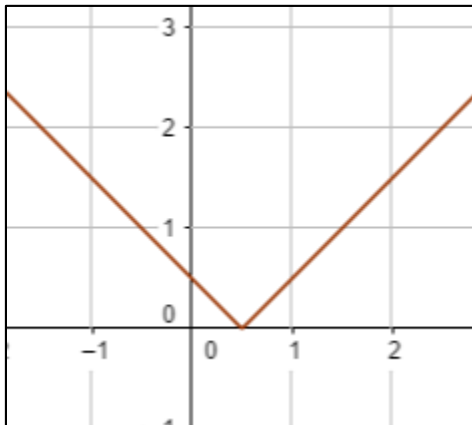


2.

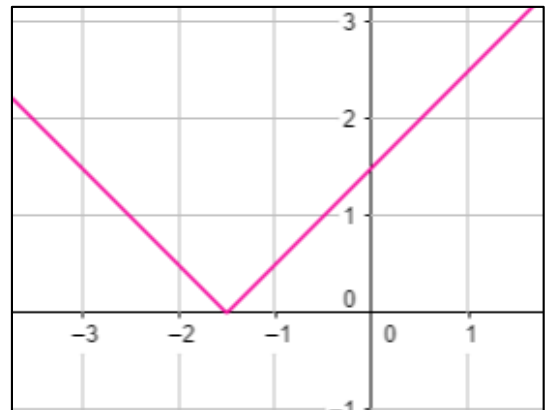


Graphing Absolute Value Functions Assignment

3.

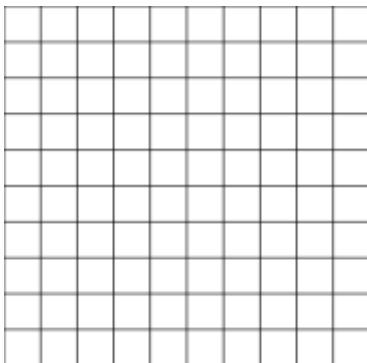


4.



Graph each equation by reflecting and translating the function $y = |x|$.

1. $y = -|x| + 1$



2. $y = -|x - 2|$

